



  
**BLISS WATER PARK**  
NAIVASHA

**LIVE. EARN. LEISURE.**  
NAIVASHA'S PREMIER HOLIDAY HOMES

*Financing Partners*

  
**National Bank**  
A Subsidiary of KCB Group PLC

**A GREAT INVESTMENT OPPORTUNITY.**

**AT THE HEART OF NAIVASHA**





## WHY NAIVASHA?

NAIVASHA STRATEGICALLY SITS BETWEEN TWO CITIES – NAIROBI (89KM) AND NAKURU (69) WHICH MAKES IT A PRIME BUSINESS HUB.

It is also regarded as a great family holiday destination with scenic attractions such as the Hells Gate Park, Lake Naivasha, Mount Longonot among others. Naivasha boasts some of the best hotels and conferencing facilities, and hosts the Safari Rally each year which makes it a great place to invest in.



## WHAT IS BLISS WATER PARK

Bliss Water Park is a Premier Holiday Homes concept set on gentle slopes overlooking Lake Naivasha and Mount Longonot.

It is designed to host an **OLYMPIC SIZE** swimming pool, a **WATER PARK, CONFERENCE FACILITIES** and **HOLIDAY HOMES** for accommodation.

# CONFERRNCING FACILITY



# THE VILLAS



**One Bedroom Suite**  
From **KES5.15M (\$38,000)**

**Financing:**  
**KES48,000 Pm (\$355)**  
**Up to 20 years**

**Two Bedroom Suite**  
From **KES6.15M (\$45,000)**

**Financing:**  
**KES57,000 Pm (\$425)**  
**Up to 20 years**

**Two Bedroom Villa**  
From **KES7.5M (\$55,000)**

**Financing:**  
**KES69,000 Pm (\$515)**  
**Up to 20 years**

**Three Bedroom Villa**  
From **KES9.5M (\$70,000)**

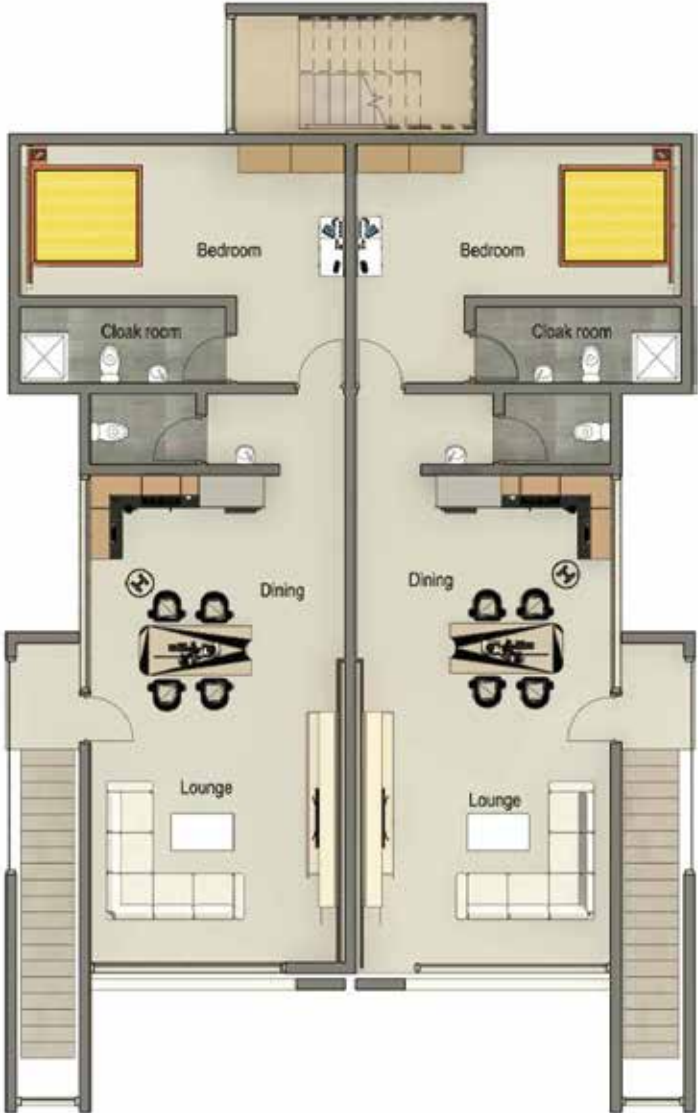
**Financing:**  
**KES88,000 Pm (\$650)**  
**Up to 20 years**

**Four Bedroom Villa**  
From **KES16M (\$118,000)**

**Financing:**  
**KES97,000 Pm (\$875)**  
**Up to 20 years**

\*\*As at July 2024

# THE VILLAS – ONE BEDROOM SUITES



**GROUND FLOOR PLAN WITH 2 UNITS**



**FIRST FLOOR PLAN WITH 2 UNITS**

# THE VILLAS – TWO BEDROOM SUITES



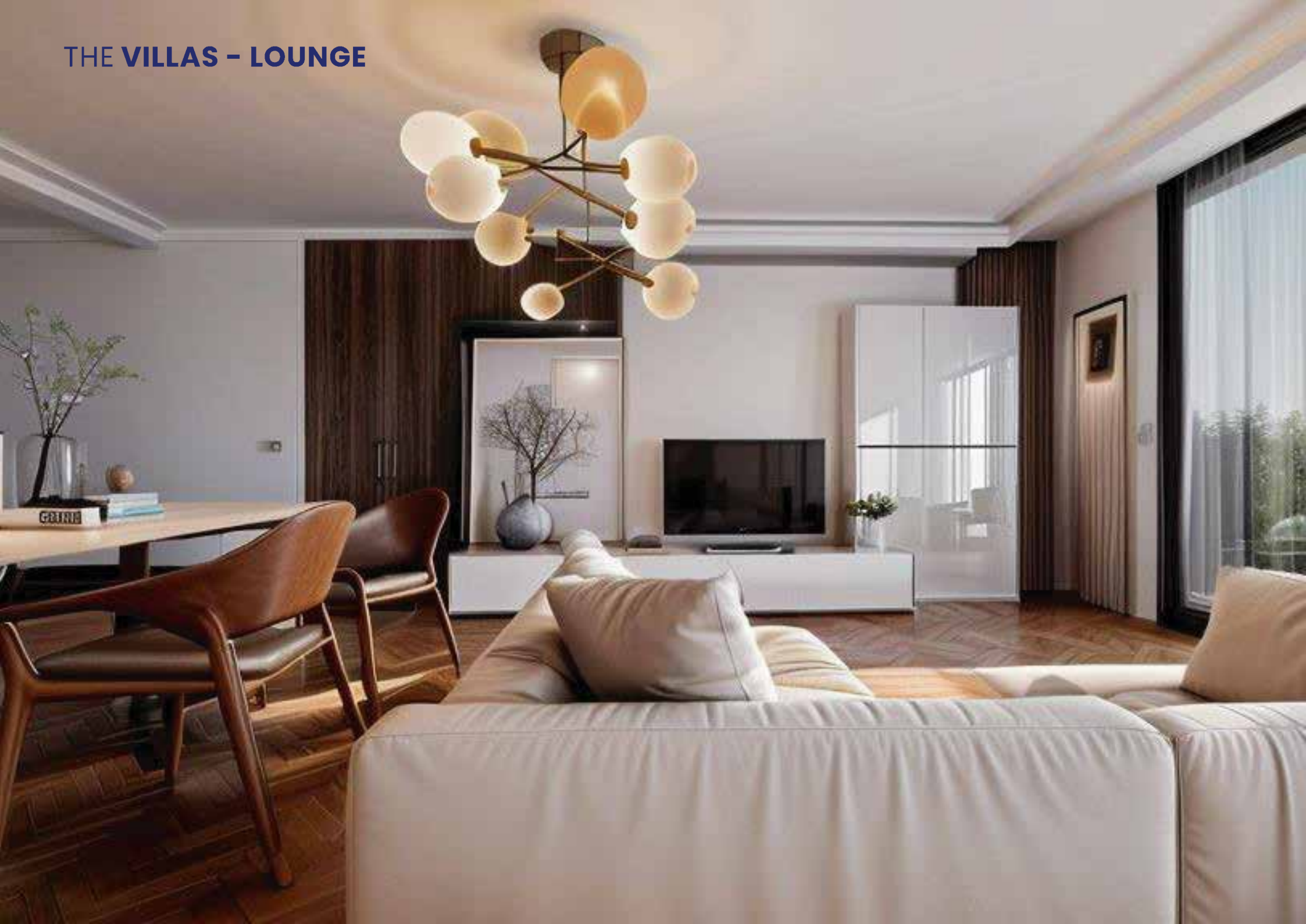
**GROUND FLOOR PLAN WITH 2 UNITS**



**FIRST FLOOR PLAN WITH 2 UNITS**



## THE VILLAS – LOUNGE



# INVESTING IN THE VILLA – THE NUMBERS



Unit	Sale Price	USD	Size (SQM)	Daily Rate	Occupancy (40%)	Monthly Revenue	Annual Revenue	ROI
1-Bedroom Deluxe Suite	5,150,000	38,148	62	12,000	12	144,000	1,728,000	34%
2-Bedroom Deluxe Suite	6,150,000	45,556	74	15,000	12	180,000	2,160,000	35%
2-Bedroom Semi-detached Villa	7,500,000	55,556	90	20,000	12	240,000	2,880,000	38%
3-Bedroom Semi-detached Villa	9,500,000	70,370	115	25,000	12	300,000	3,600,000	38%
4-Bedroom Villa	16,000,000	118,519	190	35,000	12	420,000	5,040,000	32%

\*\*The figures used for occupancy and daily rates are estimates. Amounts may change depending on season among other factors.

\*\*As at July 2024

**BLISS WATER PARK**  
- NAIVASHA -





# BLISS WATER PARK

NAIVASHA



CONTACT

PROJECT BY



Financing Partners



A Subsidiary of KCB Group PLC